

*Wishing you a very happy
Dassera & Deewali*

To
All Our Esteemed Customers

It is happy to note that retreading business has again started to slowly improve in the Second Quarter even though the increase is not very substantial. This is an indication of better business opportunities due to revival of economy and manufacturing & servicing sectors. The variation in Raw Material prices also is not much and hence we expect to keep the prices under control.

We are happy to inform you that keeping in view that rapidly increasing Radial Tyre usage, we have introduced many more sizes and new designs to meet the needs of our customers.

We request all our customers, to utilize these patterns & sizes and give their valuable feedback so as to have a continuous improvement in product quality and services.



We have developed the following Sizes for our Domestic and International Customers.

● **CROSS BAR (CB)**

Traction Characteristics:

High Traction Rear Axle, High Performance

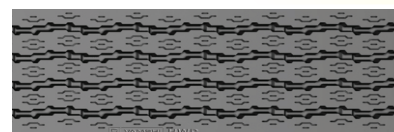


| Code | Tread Width (mm) | Tread Thickness (mm) | Non Skid Depth (mm) | Length per Tread (mm) | Under Tread Thickness (mm) | No. of Treads per Roll | Approx Weight per Tread (kg.) | Approx Weight per Package (kg.) | Applications Tyre Sizes Used on |
|----------|------------------|----------------------|---------------------|-----------------------|----------------------------|------------------------|-------------------------------|---------------------------------|---|
| CB - 205 | 205 | 17.50 | 14.00 | 3225 mm (127") | 3.50 | 3 | 11.00 | 33.00 | BIAS & RADIAL 10.00 X 20 / 9.00 R 20 |

● **HIGHWAY RADIAL (HWR)**

Traction Characteristics:

Free Rolling, All Wheel, Excellent Performance

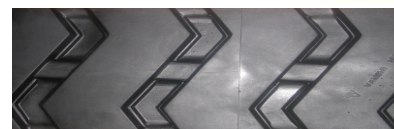


| | | | | | | | | | |
|--------------|-----|-------|-------|----------------|------|---|-------|-------|------------|
| HWR - 230 | 230 | 16.50 | 13.00 | 3240 mm (128") | 3.50 | 3 | 11.95 | 35.85 | 10.00 R 20 |
| HWR - 230 XL | 230 | 16.50 | 13.00 | 3300 mm (130") | 3.50 | 3 | 12.17 | 36.51 | 10.00 R 20 |

● **MINES TRAC (MT)**

Traction Characteristics:

Excellent Traction in Rough Terrain & Mines



| | | | | | | | | | |
|----------|-----|-------|-------|----------------|------|---|-------|-------|----------------------------|
| MT - 210 | 210 | 17.00 | 13.50 | 3225 mm (127") | 3.50 | 3 | 10.90 | 32.70 | Bias & Radia 10.00 X 20 |
|----------|-----|-------|-------|----------------|------|---|-------|-------|----------------------------|

We have developed the following Sizes for our Domestic and International Customers.

● **VAMSHI CROSS COUNTRY DRIVE (VCCD)**

Traction Characteristics:

Real Axle, Good Traction High Performance on OTR Application



| Code | Tread Width (mm) | Tread Thickness (mm) | Non Skid Depth (mm) | Length per Tread (mm) | Under Tread Thickness (mm) | No. of Treads per Roll | Approx Weight per Tread (kg.) | Approx Weight per Package (kg.) | Applications Tyre Sizes Used on |
|-----------------|------------------|----------------------|---------------------|-----------------------|----------------------------|------------------------|-------------------------------|---------------------------------|---|
| VCCD - 240 D | 240 | 23.30 | 19.60 | 3750 mm (148") | 3.70 | 2 | 19.70 | 39.40 | BIAS & RADIAL 12.00 X 24, 11 R 20, 12 R 20 |
| VCCD - 240 D SL | 240 | 23.30 | 19.60 | 3400 mm (134") | 3.70 | 2 | 17.90 | 35.80 | BIAS & RADIAL 12.00 X 24, 11 R 20, 12 R 20 |

● **VAMSHI RADIAL RIB (VRR)**

Traction Characteristics:

Free Rolling All Wheel Excellent Performance



| | | | | | | | | | |
|----------------|-----|-------|-------|----------------|------|---|-------|-------|---------------------------|
| VRR - 220 R | 220 | 16.20 | 13.00 | 3225 mm (127") | 3.20 | 3 | 11.15 | 33.45 | RADIAL ONLY 10.00 R 20 |
| VRR - 220 R XL | 220 | 16.20 | 13.00 | 3300 mm (130") | 3.20 | 3 | 11.40 | 34.20 | RADIAL ONLY 10.00 R 20 |

● **VAMSHI SUPER RADIAL (VSR)**

Traction Characteristics:

Free Rolling All Wheel Excellent Performance



| | | | | | | | | | |
|----------------|-----|-------|-------|----------------|------|---|-------|-------|---------------------------|
| VSR - 230 R | 230 | 16.50 | 13.30 | 3235 mm (127") | 3.20 | 3 | 11.70 | 35.10 | RADIAL ONLY 10.00 R 20 |
| VSR - 230 R XL | 230 | 16.50 | 13.30 | 3300 mm (130") | 3.20 | 3 | 11.95 | 35.85 | RADIAL ONLY 10.00 R 20 |

● **VAMSHI TRAILER SPECIAL (VTS)**

Traction Characteristics:

Rear Axle, Good Traction, Good Performance.



| | | | | | | | | | |
|--------------|-----|-------|-------|----------------|------|---|-------|-------|--|
| VTS - 290 | 290 | 16.60 | 13.80 | 3300 mm (130") | 2.80 | 2 | 15.18 | 30.36 | RADIAL 385/65R22.5 SUPER SINGLES |
| VTS - 290 XL | 290 | 16.60 | 13.80 | 3400 mm (134") | 2.80 | 2 | 15.64 | 31.28 | RADIAL 385/65R22.5 SUPER SINGLES |
| VTS - 320 | 320 | 16.60 | 13.80 | 3300 mm (130") | 2.80 | 2 | 16.80 | 33.60 | RADIAL 385/65R22.5 SUPER SINGLES |
| VTS - 320 XL | 320 | 16.60 | 13.80 | 3400 mm (134") | 2.80 | 2 | 17.30 | 34.60 | RADIAL 385/65R22.5 SUPER SINGLES |

Hope you liked this NEWSLETTER. We solicit your feed back for improvisation.

Your sincerely,

R. SURENDRA REDDY

Managing Director

**AN ISO 9001-2008
CERTIFIED COMPANY**