



ISO 9001-2015 Company



Vamshi Rubber Limited has emerged as a name to reckon within the tyre retreading material manufacturing industry and is confidently poised today to become the market leader with ISO 9001 : 2015 certification.

The State of the art manufacturing unit is ideally located near Hyderabad in a sprawling 4 acre estate.

The modern precured retreading cold process ensures better performance with increased durability and working miracles in terms of comfort, traction, long life and fuel economy.

Vamshi is a pioneer in this field with excellent reputation for meticulous manufacturing process and stringent quality control measures to suit global standards.

Recognizing the immense untapped potential in the automotive industry and motivated by the commitment to uncompromising quality, **Vamshi Rubber Limited** manufactures excellent quality retread materials with Technology absorption from Hercules Tires & Rubber Co.,USA.

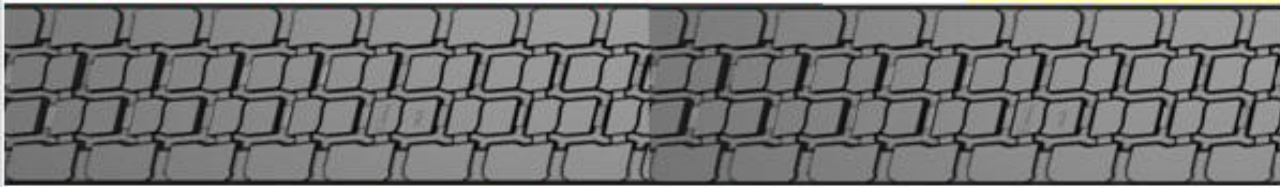
VRL helps its customers to grow through Technical and marketing assistance and upgradation of Retreading Machinery, campaign material and continuous personnel training. As a privileged customer, joining hands with Vamshi sets you successfully in the track of rewarding growth and ample returns

VAMSHI

TREADS

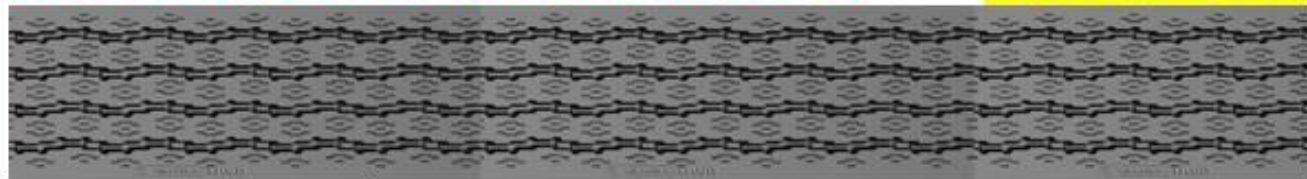
PRODUCT BROCHURE

RADIAL ONLY

HIGHWAY LUG RADIAL (HLR)**RADIAL ONLY****Traction Characteristics:** *Excellent Traction, RearAxle, High Performance*

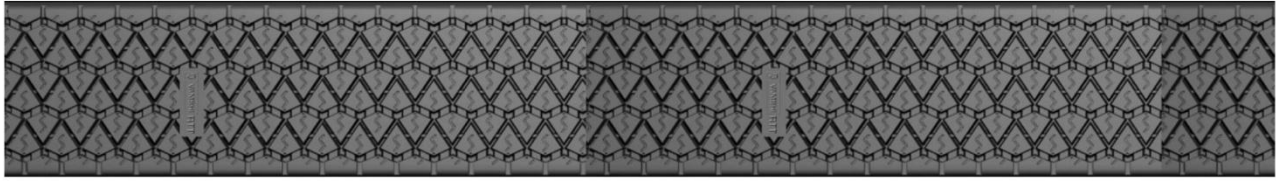
Product Code	Tread width (mm)	Tread Length (Inch)	Tread Length (mm)	Non-Skid Depth (mm)	Weight per Tread	Treads Per Roll (kgs)	Roll Weight (kgs)	For Tyre / Sizes
HLR 187-120	187	120	3050	14.40	9.50	3	28.50	8.25-R-16
HLR 205-127	205	127	3225	14.00	11.25	3	33.75	9.00-R-20
HLR 210-127	210	127	3225	14.00	11.40	3	34.20	10.00-R-20
HLR 210-128	210	128	3250	14.00	11.50	3	34.50	10.00-R-20
HLR 215-127	215	127	3225	13.90	11.55	3	34.65	10.00-R-20
HLR 215-128	215	128	3250	13.90	11.65	3	34.95	10.00-R-20
HLR 220-128	220	128	3240	13.80	11.85	3	35.55	10.00-R-20
HLR 220-130	220	130	3300	13.80	12.10	3	36.30	10.00-R-20
HLR 220-H-126	220	126	3200	18.10	14.85	2	29.70	10.00-R-20
HLR 220-H-130	220	130	3300	18.10	15.30	2	30.60	10.00-R-20
HLR 220-R-128	220	128	3250	13.20	11.30	3	33.90	10.00-R-20

*** Commercial Tolerance \pm 2% is to be allowed**

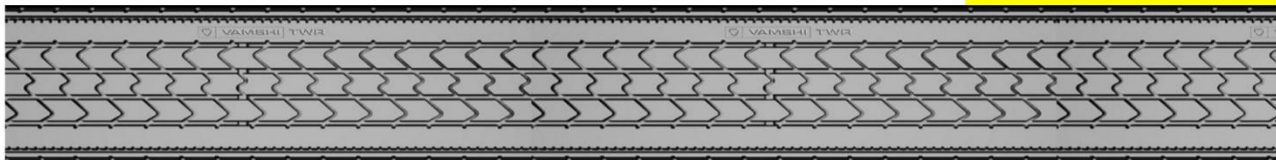
HIGHWAY RADIAL (HWR)**RADIAL ONLY**

Traction Characteristics:		Free Rolling, All Wheel, Excellent Performance						
Product Code	Tread width (mm)	Tread Length (Inch)	Tread Length (mm)	Non-Skid Depth (mm)	Weight per Tread	Treads Per Roll (kgs)	Roll Weight (kgs)	For Tyre / Sizes
HWR 200-096	200	96	2450	10.50	6.52	5	32.60	235/75-R-17.5
HWR 205-096	205	96	2450	12.60	7.50	4	30.00	235/75-R-17.5
HWR 205-099	205	99	2525	12.60	7.70	4	30.80	235/75-R-17.5
HWR 205-128	205	128	3250	12.60	9.90	3	29.70	9.00-R-20 10.00-R-20
HWR 210-127	210	127	3225	13.90	11.25	3	33.75	10.00-R-20
HWR 210-130	210	130	3300	13.90	11.50	3	34.50	10.00-R-20 11.00-R-20
HWR 215-127	215	127	3225	13.70	11.65	3	34.95	10.00-R-20
HWR 215-128	215	128	3250	13.70	11.75	3	35.25	10.00-R-20
HWR 215-130	215	130	3300	13.70	11.92	3	35.76	10.00-R-20 11.00-R-20
HWR 220-127	220	127	3225	13.25	11.44	3	34.32	10.00-R-20
HWR 220-130	220	130	3300	13.25	11.70	3	35.10	10.00-R-20 11.00-R-20
HWR 220-134	220	134	3400	13.25	12.05	3	36.15	10.00-R-20 11.00-R-20
HWR 220-H-127	220	127	3225	14.50	12.15	3	36.45	10.00-R-20
HWR 220-H-129	220	129	3275	14.50	12.35	3	37.05	10.00-R-20 11.00-R-20
HWR 225-127	225	127	3225	14.30	12.35	3	37.05	10.00-R-20
HWR 230-128	230	128	3240	13.00	12.10	3	36.30	10.00-R-20
HWR 230-130	230	130	3300	13.00	12.35	3	37.05	10.00-R-20 11.00-R-20
HWR 230-134	230	134	3400	13.00	12.70	3	38.10	10.00-R-20 11.00-R-20
HWR 240-127	240	127	3225	12.80	12.25	3	36.75	11-R-22.5 295/80-R-22.5
HWR 240-130	240	130	3300	12.80	12.50	3	37.50	11-R-22.5 295/80-R-22.5
HWR 240-134	240	134	3400	12.80	12.85	3	38.55	11-R-22.5 295/80-R-22.5
HWR 240-R-130	238	130	3300	9.80	10.00	3	30.00	10.00-R-20 11.00-R-20 12.00-R-20 295/850-R-22.5
HWR 250-126	250	126	3200	14.00	13.60	2	27.20	295/80-R-22.5
HWR 250-130	250	130	3300	14.00	14.03	2	28.06	295/80-R-22.5
HWR 250-134	250	134	3400	14.00	14.45	2	28.90	295/80-R-22.5

* Commercial Tolerance $\pm 2\%$ is to be allowed

RADIAL TEMPO TRAVELLER (RTT)**RADIAL ONLY****Traction Characteristics:** *Free Rolling, All Wheel, High Performance, Light Truck*

Product Code	Tread width (mm)	Tread Length (Inch)	Tread Length (mm)	Non-Skid Depth (mm)	Weight per Tread	Treads Per Roll (kgs)	Roll Weight (kgs)	For Tyre / Sizes
RTT 174-087	174	87	2210	11.30	5.05	6	30.30	215/75-R-15

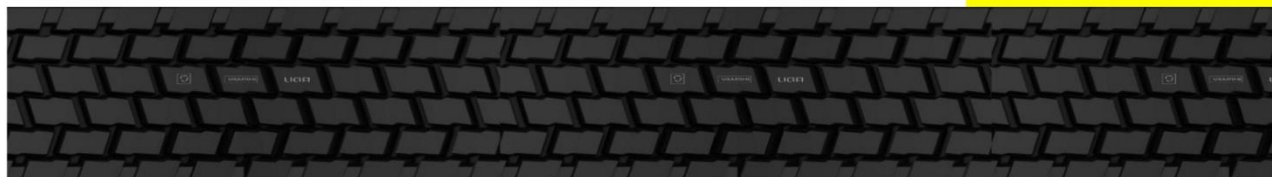
* Commercial Tolerance \pm 2% is to be allowed**TRIALWAY RADIAL (TWR)****RADIAL ONLY****Traction Characteristics:** *Free Rolling, All Wheel, High Speed, High Performance*

Product Code	Tread width (mm)	Tread Length (Inch)	Tread Length (mm)	Non-Skid Depth (mm)	Weight per Tread	Treads Per Roll (kgs)	Roll Weight (kgs)	For Tyre / Sizes
TWR 219-127	219	127	3215	10.50	9.80	3	29.40	10.00-R-20
TWR 219-130	219	130	3300	10.50	10.05	3	30.15	10.00-R-20 11.00-R-20

* Commercial Tolerance \pm 2% is to be allowed

ULTRA GRIP RADIAL (UGR)

RADIAL ONLY



Traction Characteristics: *Rear Axle, Good Traction, High Performance*

Product Code	Tread width (mm)	Tread Length (Inch)	Tread Length (mm)	Non-Skid Depth (mm)	Weight per Tread	Treads Per Roll (kgs)	Roll Weight (kgs)	For Tyre / Sizes
UGR 210-130	210	130	3300	14.60	11.20	3	33.60	10.00-R-20
UGR 219-130	219	130	3300	13.50	11.15	3	33.45	10.00-R-20 11.00-R-20

* Commercial Tolerance \pm 2% is to be allowed

VAMSHI DIRECTIONAL RADIAL(VDR)

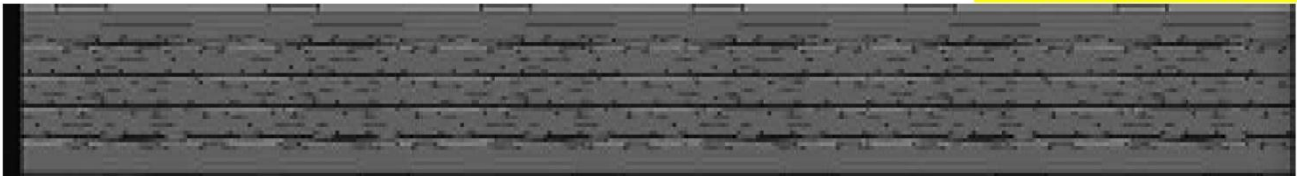
RADIAL ONLY



Traction Characteristics: *Rear Axle, Good Traction, High Performance, Mixed Service*

Product Code	Tread width (mm)	Tread Length (Inch)	Tread Length (mm)	Non-Skid Depth (mm)	Weight per Tread	Treads Per Roll (kgs)	Roll Weight (kgs)	For Tyre / Sizes
VDR 220-130	220	130	3300	15.00	12.65	3	37.95	10.00-R-20 11.00-R-20
VDR 230-130	230	130	3300	15.00	13.30	2	26.60	10.00-R-20 11.00-R-20

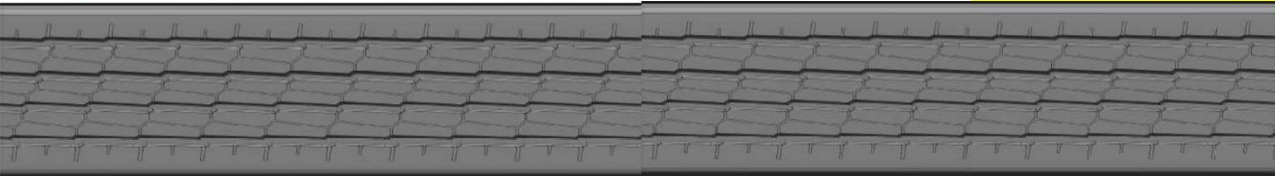
* Commercial Tolerance \pm 2% is to be allowed

VAMSHI HIGH SPEED RADIAL(VHSR)**RADIAL ONLY**

Traction Characteristics: *Free Rolling, All Wheel, Excellent Performance*

Product Code	Tread width (mm)	Tread Length (Inch)	Tread Length (mm)	Non-Skid Depth (mm)	Weight per Tread	Treads Per Roll (kgs)	Roll Weight (kgs)	For Tyre / Sizes
VHSR 215-128	215	128	3240	11.50	10.20	3	30.60	10.00-R-20

*** Commercial Tolerance \pm 2% is to be allowed**

VAMSHI RADIAL ALL WHEEL(VRAW)**RADIAL ONLY**

Traction Characteristics: *Free Rolling, All Wheel, High Performance*

Product Code	Tread width (mm)	Tread Length (Inch)	Tread Length (mm)	Non-Skid Depth (mm)	Weight per Tread	Treads Per Roll (kgs)	Roll Weight (kgs)	For Tyre / Sizes
VRAW 215-128	215	128	3250	13.10	10.95	3	32.85	10.00-R-20
VRAW 220-128	220	128	3250	13.60	11.45	3	34.35	10.00-R-20 11.00-R-20

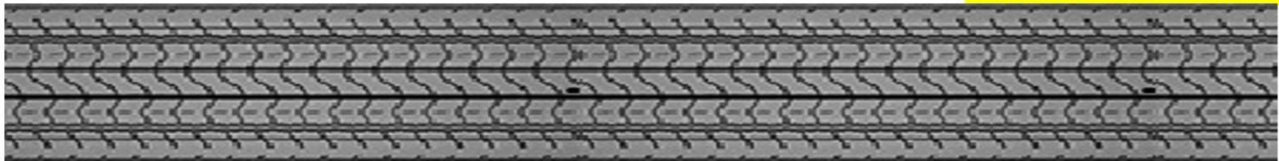
*** Commercial Tolerance \pm 2% is to be allowed**

VAMSHI RADIAL CHALLENGE (VRC)**RADIAL ONLY**

Traction Characteristics: *Free Rolling, All Wheel, Good Traction, High Performance*

Product Code	Tread width (mm)	Tread Length (Inch)	Tread Length (mm)	Non-Skid Depth (mm)	Weight per Tread	Treads Per Roll (kgs)	Roll Weight (kgs)	For Tyre / Sizes
VRC 220-128	220	128	3260	12.50	10.95	3	32.85	10.00-R-20

*** Commercial Tolerance \pm 2% is to be allowed**

VAMSHI RADIAL HIGHWAY (VRH)**RADIAL ONLY**

Traction Characteristics: *Free Rolling, All Wheel, High Performance*

Product Code	Tread width (mm)	Tread Length (Inch)	Tread Length (mm)	Non-Skid Depth (mm)	Weight per Tread	Treads Per Roll (kgs)	Roll Weight (kgs)	For Tyre / Sizes
VRH 220-129	220	129	3275	13.10	11.65	3	34.95	10.00-R-20 11.00-R-20

*** Commercial Tolerance \pm 2% is to be allowed**

VAMSHI RADIAL EXCEL (VRE)**RADIAL ONLY****Traction Characteristics:** *Free Rolling, All Wheel, Excellent Performance*

Product Code	Tread width (mm)	Tread Length (mm)	Tread Length (mm)	Non-Skid Depth (mm)	Weight per Tread	Treads Per Roll (mm)	Roll Weight (kgs)	For Tyre / Sizes
VRE 200-096	200	96	2450	14.00	8.30	4	33.20	235/75-R-17.5
VRE 205-127	205	127	3235	13.50	11.05	3	33.15	9.00-R-20
VRE 210-127	210	127	3235	14.00	11.63	3	34.89	9.00-R-20 10.00-R-20
VRE 215-127	215	127	3235	14.15	11.75	3	35.25	10.00-R-20
VRE 215-130	215	130	3300	14.15	11.98	3	35.94	10.00-R-20 11.00-R-20
VRE 225-127	225	127	3235	13.65	12.50	3	37.50	10.00-R-20 11.00-R-20
VRE 225-130	225	130	3300	13.65	12.75	3	38.25	10.00-R-20 11.00-R-20
VRE 240-129	240	129	3280	16.00	14.25	2	28.50	11.00-R-22.5 295/80-R-22.5
VRE 245-130	245	130	3300	14.00	13.80	2	27.60	295/80-R-22.5

*** Commercial Tolerance \pm 2% is to be allowed**

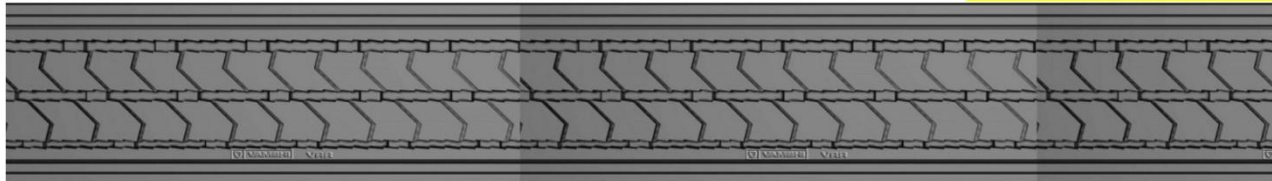
VAMSHI RADIAL LONG DRIVE (VRLD)**RADIAL ONLY****Traction Characteristics:** *Rear Wheel, Good Traction, High Performance*

Product Code	Tread width (mm)	Tread Length (Inch)	Tread Length (mm)	Non-Skid Depth (mm)	Weight per Tread	Treads Per Roll (kgs)	Roll Weight (kgs)	For Tyre / Sizes
VRLD 215-128	215	128	3245	14.00	11.40	3	34.20	10.00-R-20
VRLD 215-130	215	130	3300	14.00	11.59	3	34.77	10.00-R-20
VRLD 220-128	220	128	3250	14.00	11.75	3	35.25	10.00-R-20
VRLD 220-130	220	130	3300	14.00	11.90	3	35.70	10.00-R-20
VRLD 230-127	230	127	3225	14.00	12.10	3	36.30	10.00-R-20
VRLD 230-129	230	129	3285	14.00	12.35	3	37.05	10.00-R-20
VRLD 230-133	230	133	3390	14.00	12.75	3	38.25	11.00-R-20

*** Commercial Tolerance \pm 2% is to be allowed**

VAMSHI RADIAL RIB (VRR)

RADIAL ONLY



Traction Characteristics: *Free Rolling, All Wheel, Excellent Performance*

Product Code	Tread width (mm)	Tread Length (Inch)	Tread Length (mm)	Non-Skid Depth (mm)	Weight per Tread	Treads Per Roll (kgs)	Roll Weight (kgs)	For Tyre / Sizes
VRR 210-127	210	127	3225	13.50	11.40	3	34.20	10.00-R-20
VRR 210-130	210	130	3300	13.50	11.65	3	34.95	10.00-R-20 11.00-R-20
VRR 220-127	220	127	3225	14.10	12.45	3	37.35	10.00-R-20
VRR 220-128	220	128	3250	14.10	12.55	3	37.65	10.00-R-20
VRR 220-130	220	130	3300	14.10	12.75	3	38.25	10.00-R-20 11.00-R-20
VRR 220-H-130	220	130	3300	18.00	15.00	2	30.00	10.00-R-20 11.00-R-20
VRR 220-R-127	220	127	3225	13.00	11.35	3	34.05	10.00-R-20
VRR 220-R-128	220	128	3250	13.00	11.45	3	34.35	10.00-R-20
VRR 220-R-130	220	130	3300	13.00	11.60	3	34.80	10.00-R-20 11.00-R-20
VRR 230-130	230	130	3300	14.10	13.30	2	26.60	10.00-R-20 11.00-R-20
VRR 230-H-130	230	130	3300	18.00	15.70	2	31.40	10.00-R-20 11.00-R-20

*** Commercial Tolerance \pm 2% is to be allowed**

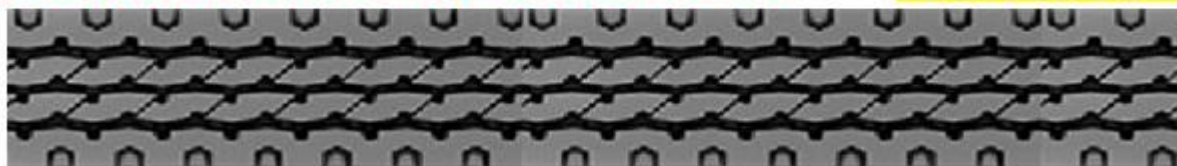
VAMSHI RADIAL SUPREME (VRS)**RADIAL ONLY****Traction Characteristics:** *Free Rolling, All Wheel, High Performance*

Product Code	Tread width (mm)	Tread Length (Inch)	Tread Length (mm)	Non-Skid Depth (mm)	Weight per Tread	Treads Per Roll (kgs)	Roll Weight (kgs)	For Tyre / Sizes
VRS 205-127	205	127	3235	14.00	11.35	3	34.05	9.00-R-20 10.00-R-20
VRS 210-127	210	127	3235	14.00	11.70	3	35.10	10.00-R-20

*** Commercial Tolerance \pm 2% is to be allowed****VAMSHI RADIAL SUPER DRIVE (VRSD)****RADIAL ONLY****Traction Characteristics:** *Excellent Traction, RearAxle, High Performance*

Product Code	Tread width (mm)	Tread Length (Inch)	Tread Length (mm)	Non-Skid Depth (mm)	Weight per Tread	Treads Per Roll (kgs)	Roll Weight (kgs)	For Tyre / Sizes
VRSD 215-128	215	128	3245	13.70	11.35	3	34.05	10.00-R-20 11.00-R-20
VRSD 220-128	220	128	3250	14.00	11.95	3	35.85	10.00-R-20 11.00-R-20
VRSD 220-R-128	220	128	3250	13.20	11.45	3	34.35	10.00-R-20 11.00-R-20

*** Commercial Tolerance \pm 2% is to be allowed**

VAMSHI RADIAL XPRESS (VRX)**RADIAL ONLY****Traction Characteristics:** *Free Rolling, All Wheel, High Performance*

Product Code	Tread width (mm)	Tread Length (Inch)	Tread Length (mm)	Non-Skid Depth (mm)	Weight per Tread	Treads Per Roll (kgs)	Roll Weight (kgs)	For Tyre / Sizes
VRX 205-127	205	127	3225	13.20	9.90	3	29.70	9.00-R-20 10.00-R-20
VRX 215-128	215	128	3250	13.10	11.05	3	33.15	10.00-R-20
VRX 220-127	220	127	3225	13.80	11.10	3	33.30	10.00-R-20 11.00-R-20
VRX 220-128	220	128	3250	13.80	11.20	3	33.60	10.00-R-20 11.00-R-20

*** Commercial Tolerance \pm 2% is to be allowed****VAMSHI SUPER HAULTRAILER (VSHT)****RADIAL ONLY****Traction Characteristics:** *Rear Axle, Good Traction, Good Performance*

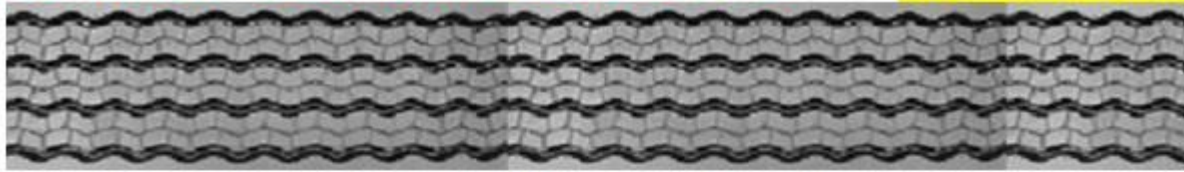
Product Code	Tread width (mm)	Tread Length (Inch)	Tread Length (mm)	Non-Skid Depth (mm)	Weight per Tread	Treads Per Roll (kgs)	Roll Weight (kgs)	For Tyre / Sizes
VSHT 220-130	220	130	3300	16.00	13.05	3	39.15	10.00-R-20 11.00-R-20

*** Commercial Tolerance \pm 2% is to be allowed**

VAMSHI SUPER RADIAL (VSR)**RADIAL ONLY****Traction Characteristics:** *Free Rolling, All Wheel, High Performance*

Product Code	Tread width (mm)	Tread Length (Inch)	Tread Length (mm)	Non-Skid Depth (mm)	Weight per Tread	Treads Per Roll (kgs)	Roll Weight (kgs)	For Tyre / Sizes
VSR 210-127	210	127	3225	13.60	11.05	3	33.15	10.00-R-20
VSR 215-127	215	127	3225	13.50	11.55	3	34.65	10.00-R-20
VSR 215-128	215	128	3250	13.50	11.65	3	34.95	10.00-R-20
VSR 215-130	215	130	3300	13.50	11.80	3	35.40	10.00-R-20 11.00-R-20
VSR 220-128	220	128	3240	14.00	12.50	3	37.50	10.00-R-20
VSR 220-130	220	130	3300	14.00	12.75	3	38.25	10.00-R-20 11.00-R-20
VSR 220-H-129	220	129	3270	18.00	14.70	2	29.40	10.00-R-20 11.00-R-20
VSR 220-R-127	220	127	3225	13.30	11.35	3	34.05	10.00-R-20 11.00-R-20
VSR 220-R-128	220	128	3250	13.30	11.45	3	34.35	10.00-R-20 11.00-R-20
VSR 220-R-130	220	130	3300	13.30	11.60	3	34.80	10.00-R-20 11.00-R-20
VSR 220-R-132	220	132	3365	13.30	11.86	3	35.58	11.00-R-20
VSR 230-129	230	129	3270	14.60	13.35	2	26.70	10.00-R-20 11.00-R-20
VSR 230-H-129	230	129	3270	18.10	15.40	2	30.80	10.00-R-20 11.00-R-20
VSR 230-R-128	230	128	3240	12.80	11.75	3	35.25	10.00-R-20
VSR 230-R-130	230	130	3300	12.80	12.00	3	36.00	10.00-R-20 11.00-R-20

* Commercial Tolerance $\pm 2\%$ is to be allowed

VAMSHI TRAILER PLUS (VTP)**RADIAL ONLY****Traction Characteristics:** *Free Rolling, All Wheel, High Performance*

Product Code	Tread width (mm)	Tread Length (Inch)	Tread Length (mm)	Non-Skid Depth (mm)	Weight per Tread	Treads Per Roll (kgs)	Roll Weight (kgs)	For Tyre / Sizes
VTP 220-127	220	127	3225	14.70	12.70	3	38.10	10.00-R-20
VTP 220-130	220	130	3300	14.70	13.00	3	39.00	10.00-R-20 11.00-R-20

*** Commercial Tolerance \pm 2% is to be allowed**

VAMSHI

TREADS

PRODUCT BROCHURE

BIAS & RADIAL

ALL TRAC [AT]

BIAS & RADIAL



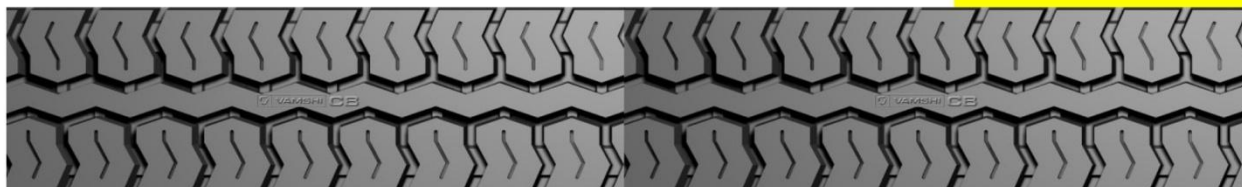
Traction Characteristics: *High Traction, Rear Axle, High Performance*

Product Code	Tread width (mm)	Tread Length (Inch)	Tread Length (mm)	Non-Skid Depth (mm)	Weight per Tread	Treads Per Roll (kgs)	Roll Weight (kgs)	For Tyre / Sizes
AT 132-088	132	88	2235	10.00	3.45	8	27.60	6.00X16
AT 205-127	205	127	3225	13.80	9.90	3	29.70	9.00-R-20 10.00-X-20

* Commercial Tolerance \pm 2% is to be allowed

CROSS BAR [CB]

BIAS & RADIAL



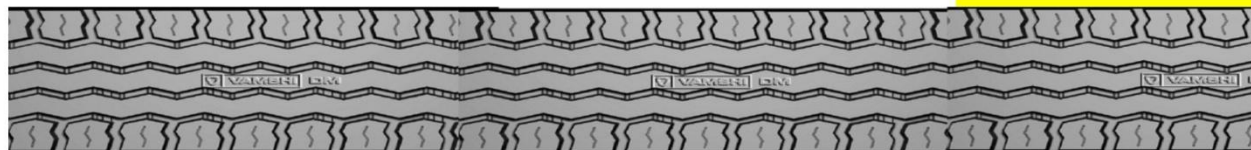
Traction Characteristics: *High Traction, Rear Axle, High Performance*

Product Code	Tread width (mm)	Tread Length (Inch)	Tread Length (mm)	Non-Skid Depth (mm)	Weight per Tread	Treads Per Roll (kgs)	Roll Weight (kgs)	For Tyre / Sizes
CB 143-094	143	94	2390	11.60	4.85	6	29.10	7.00X15
CB 153-094	153	94	2390	11.10	4.95	6	29.70	7.00X15
CB 205-127	205	127	3225	14.00	11.15	3	33.45	9.00-R-20 10.00-X-20
CB 210-127	210	127	3225	14.20	11.75	3	35.25	10.00-R-20 10.00-X-20

* Commercial Tolerance \pm 2% is to be allowed

DRIVE MASTER (DM)

BIAS & RADIAL



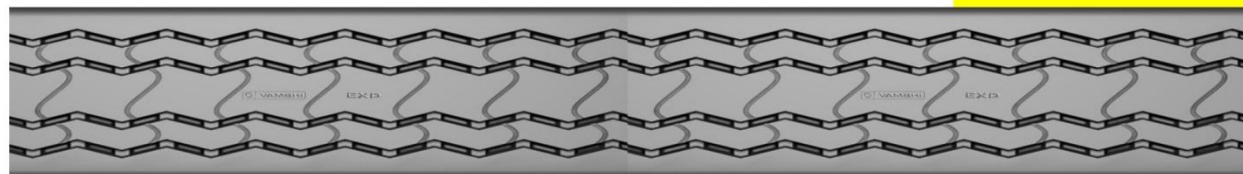
Traction Characteristics: *Free Rolling, All Wheel, Good Traction, Good Performance*

Product Code	Tread width (mm)	Tread Length (Inch)	Tread Length (mm)	Non-Skid Depth (mm)	Weight per Tread	Treads Per Roll (kgs)	Roll Weight (kgs)	For Tyre / Sizes
DM 153-098	153	98	2490	11.70	5.20	5	26.00	7.50-X-16
DM 160-H-098	160	98	2490	14.70	6.85	4	27.40	7.50-X-16
DM 187-123	187	123	3125	15.00	9.90	3	29.70	9.00-X-20
DM 203-H-127	203	127	3225	15.30	11.45	3	34.35	9.00-R-20 10.00-X-20
DM 205-L-127	205	127	3225	12.20	10.15	3	30.45	9.00-R-20 10.00-X-20
DM 205-SH-127	205	127	3225	17.00	12.70	3	38.10	9.00-R-20 10.00-X-20

* Commercial Tolerance \pm 2% is to be allowed

EXPRESS (EXP)

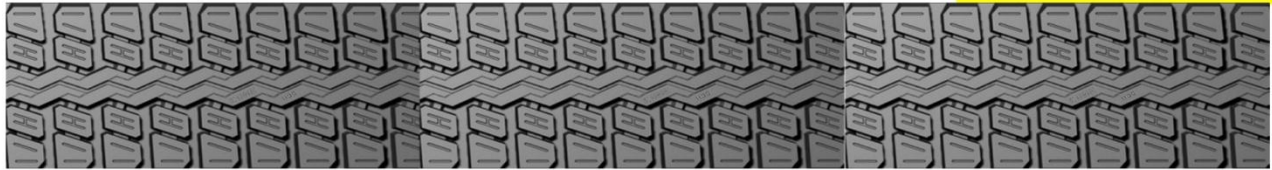
BIAS & RADIAL



Traction Characteristics: *Free Rolling, All Wheel, High Performance*

Product Code	Tread width (mm)	Tread Length (Inch)	Tread Length (mm)	Non-Skid Depth (mm)	Weight per Tread	Treads Per Roll (kgs)	Roll Weight (kgs)	For Tyre / Sizes
EXP 205-127	205	127	3225	14.10	11.55	3	34.65	9.00-R-20 10.00-X-20

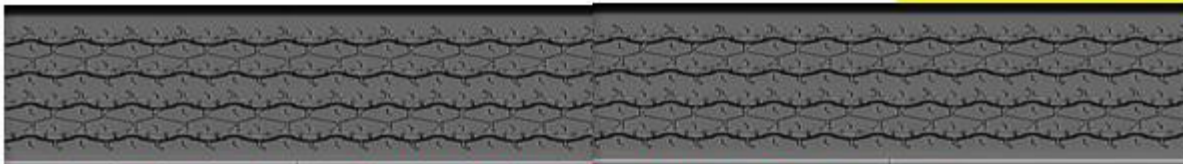
* Commercial Tolerance \pm 2% is to be allowed



Traction Characteristics: *High Traction, Rear Axle, High Performance*

Product Code	Tread width (mm)	Tread Length (Inch)	Tread Length (mm)	Non-Skid Depth (mm)	Weight per Tread	Treads Per Roll (kgs)	Roll Weight (kgs)	For Tyre / Sizes
HGC 205-R-125	205	125	3185	14.80	10.80	3	32.40	9.00-R-20 10.00-X-20
HGC 205-R-127	205	127	3225	14.80	10.95	3	32.85	9.00-R-20 10.00-X-20
HGC 205-127	205	127	3225	15.60	11.80	3	35.40	9.00-R-20 10.00-X-20
HGC 210-127	210	127	3225	15.10	11.65	3	34.95	10.00-R-20 10.00-X-20
HGC 215-127	215	127	3225	15.00	11.90	3	35.70	10.00-R-20
HGC 219-130	219	130	3300	14.00	11.95	3	35.85	10.00-R-20
HGC 228-130	228	130	3300	12.80	12.05	3	36.15	10.00-R-20 11.00-R-20 11.00-X-20

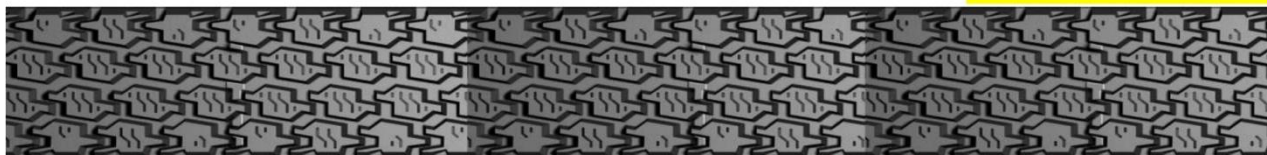
*** Commercial Tolerance \pm 2% is to be allowed**

HIGH MILEAGE SPECIAL (HMS)**BIAS & RADIAL**

Traction Characteristics: *Excellent Traction, Rear Axle, High Performance*

Product Code	Tread width (mm)	Tread Length (Inch)	Tread Length (mm)	Non-Skid Depth (mm)	Weight per Tread	Treads Per Roll (kgs)	Roll Weight (kgs)	For Tyre / Sizes
HMS 160-098	160	98	2490	11.80	5.83	5	29.15	7.50-X-16
HMS 170-104	170	104	2640	13.00	7.20	4	28.80	8.25-X-16
HMS 170-118	170	118	3000	13.00	8.15	4	32.60	8.25-X-20
HMS 205-127	205	127	3225	13.60	10.80	3	32.40	10.00-X-20

*** Commercial Tolerance \pm 2% is to be allowed**

LT TRAC (LTT)**BIAS & RADIAL**

Traction Characteristics: *Dynamic Traction, Aggressive Wet Grip, All Wheel, Light Truck*

Product Code	Tread width (mm)	Tread Length (Inch)	Tread Length (mm)	Non-Skid Depth (mm)	Weight per Tread	Treads Per Roll (kgs)	Roll Weight (kgs)	For Tyre / Sizes
LTT 160-087	160	87	2210	12.80	4.88	6	29.28	F78-X-15
LTT 174-087	174	87	2210	9.40	4.50	6	27.00	195/75-R-15 215/75-R-15

*** Commercial Tolerance \pm 2% is to be allowed**

SPREAD AXLE (SA)

BIAS & RADIAL



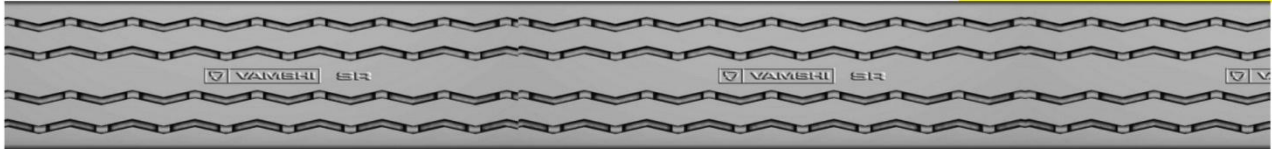
Traction Characteristics: *Free Rolling, All Wheel, Good Traction, High Performance*

Product Code	Tread width (mm)	Tread Length (Inch)	Tread Length (mm)	Non-Skid Depth (mm)	Weight per Tread	Treads Per Roll (kgs)	Roll Weight (kgs)	For Tyre / Sizes
SA 150-098	150	98	2500	11.20	5.02	6	30.12	6.00-X-16 7.00-X-15
SA 160-098	160	98	2450	11.20	5.28	5	26.40	7.50-X-16
SA 170-103	170	103	2610	12.00	6.10	5	30.50	7.50-X-16 8.25-X-20
SA 170-118	170	118	3000	12.00	7.00	4	28.00	7.50-X-16 8.25-X-20
SA 180-113	180	113	2870	13.00	7.40	4	29.60	8.25-R-20
SA 180-118	180	118	3000	13.00	7.70	4	30.80	8.25-R-20
SA 180-122	180	122	3100	13.00	7.95	4	31.80	8.25-R-20
SA 195-123	195	123	3125	15.50	10.67	3	32.01	9.00-R-20 9.00-X-20
SA 205-127	205	127	3225	14.20	11.20	3	33.60	9.00-R-20 10.00-X-20
SA 205-130	205	130	3300	14.20	11.45	3	34.35	9.00-R-20 10.00-X-20
SA 210-127	210	127	3225	14.00	11.25	3	33.75	10.00-R-20 10.00-X-20
SA 210-130	210	130	3300	14.00	11.50	3	34.50	10.00-R-20 10.00-X-20
SA 215-127	215	127	3225	14.60	11.95	3	35.85	10.00-R-20 10.00-X-20
SA 215-130	215	130	3300	14.60	12.20	3	36.60	10.00-R-20 10.00-X-20
SA 215-134	215	134	3400	14.60	12.60	3	37.80	10.00-R-20 10.00-X-20
SA 219-R-127	219	127	3225	14.00	11.65	3	34.95	10.00-R-20 11.00-X-20
SA 219-R-130	219	130	3300	14.00	11.95	3	35.85	10.00-R-20 11.00-X-20
SA 219-R-134	219	134	3400	14.00	12.30	3	36.90	12.00-R-20 11.00-X-20
SA 220-130	220	130	3300	15.50	12.50	3	37.50	10.00-R-20 11.00-X-20
SA 220-134	220	134	3400	15.50	12.85	3	38.55	12.00-R-20 11.00-X-20
SA 228-R-130	228	130	3300	13.70	12.20	3	36.60	10.00-R-20 11.00-X-20
SA 228-R-134	228	134	3400	13.70	12.60	3	37.80	12.00-R-20 11.00-X-20
SA 230-130	228	130	3300	15.40	13.40	2	26.80	10.00-R-20 11.00-X-20
SA 230-134	228	134	3400	15.40	16.80	2	33.60	12.00-R-20 11.00-X-20
SA 238-130	238	130	3300	13.50	12.85	2	25.70	11.00-R-22.5 295/80-R-22.5
SA 238-134	238	134	3400	13.50	13.25	2	26.50	11.00-R-22.5 295/80-R-22.5
SA 240-128	240	128	3250	15.00	13.05	2	26.10	11.00-R-22.5 12.00-X-20 295/80-R-22.5
SA 240-130	240	130	3300	15.00	13.25	2	26.50	11.00-R-22.5 12.00-X-20 295/80-R-22.5
SA 245-130	245	130	3300	13.80	13.30	2	26.60	295/80-R-22.5
SA 245-134	245	134	3400	13.80	13.70	2	27.40	295/80-R-22.5
SA 260-127	260	127	3225	15.70	14.25	2	28.50	295/80-R-22.5 315/80-R-22.5
SA 260-130	260	130	3300	15.70	14.55	2	29.10	295/80-R-22.5 315/80-R-22.5

* Commercial Tolerance $\pm 2\%$ is to be allowed

SUPER RIB (SR)

BIAS & RADIAL



Traction Characteristics: *Free Rolling, All Wheel, Good Traction, High Performance*

Product Code	Tread width (mm)	Tread Length (Inch)	Tread Length (mm)	Non-Skid Depth (mm)	Weight per Tread	Treads Per Roll (kgs)	Roll Weight (kgs)	For Tyre / Sizes
SR 102-120	102	120	3050	9.00	3.52	8	28.16	4.50-X-10
SR 195-123	195	123	3125	14.70	11.12	3	33.36	9.00-X-20
SR 205-M-127	205	127	3225	12.00	10.65	3	31.95	9.00-R-20 10.00-X-20
SR 205-M-129	205	129	3275	12.00	10.80	3	32.40	9.00-R-20 10.00-X-20
SR 210-D-128	210	128	3250	16.50	13.75	2	27.50	10.00-X-20

* Commercial Tolerance \pm 2% is to be allowed

TRACTOR FRONT (TF)

BIAS & RADIAL



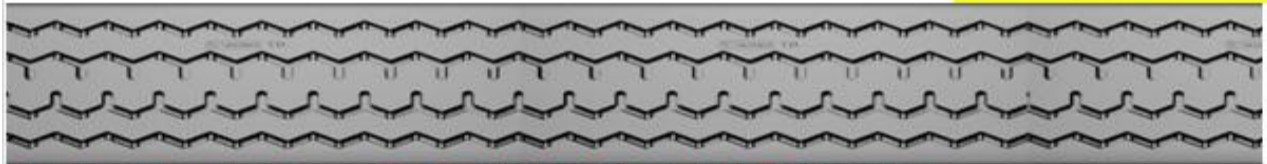
Traction Characteristics: *Free Rolling, Front Axle, High Performance*

Product Code	Tread width (mm)	Tread Length (Inch)	Tread Length (mm)	Non-Skid Depth (mm)	Weight per Tread	Treads Per Roll (kgs)	Roll Weight (kgs)	For Tyre / Sizes
TF 126-088	126	88	2240	13.70	3.90	8	31.20	6.00-X-16
TF 130-088	130	88	2235	13.70	4.25	8	34.00	6.00-X-16

* Commercial Tolerance \pm 2% is to be allowed

TURNPIKE (TP)

BIAS & RADIAL



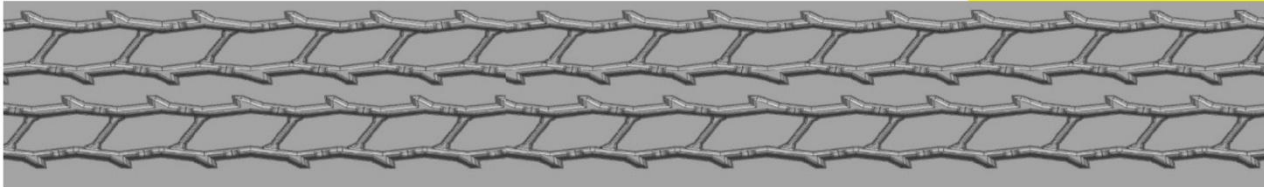
Traction Characteristics: *Free Rolling, All Wheel, High Performance*

Product Code	Tread width (mm)	Tread Length (Inch)	Tread Length (mm)	Non-Skid Depth (mm)	Weight per Tread	Treads Per Roll (kgs)	Roll Weight (kgs)	For Tyre / Sizes
TP 120-068	120	68	1730	12.50	2.85	10	28.50	4.50-X-10
TP 120-087	120	87	2210	12.50	3.75	8	30.00	6.00-X-16
TP 127-134 (67+67 Dual Length)	127	134	3400	12.30	6.30	6	37.80	4.50-X-10
TP 143-094	143	94	2390	10.60	4.60	6	27.60	7.00-X-15
TP 153-094	153	94	2390	10.80	5.15	6	30.90	7.00-X-16
TP 153-098	153	98	2490	10.80	5.35	5	26.75	7.50-X-16
TP 160-H-098	160	98	2490	12.60	6.15	5	30.75	7.50-X-16
TP 160-L-088	160	88	2235	10.50	4.90	6	29.40	6.00-X-16
TP 160-L-098	160	98	2490	10.50	5.45	5	27.25	7.50-X-16
TP 170-103	170	103	2615	12.90	7.30	4	29.20	9.25-X-16
TP 170-118	170	118	3000	12.90	8.40	4	33.60	8.25-X-20
TP 180-103	180	103	2615	14.30	7.85	4	31.40	8.25-X-20
TP 180-118	180	118	3000	14.30	9.05	3	27.15	8.25-X-20
TP 180-123	180	123	3125	14.30	9.20	3	27.60	9.00-X-20
TP 187-123	187	123	3125	14.40	9.60	3	28.80	9.00-X-20
TP 187-L-123	187	123	3125	11.00	7.60	4	30.40	9.00-X-20
TP 194-H-125	194	124	3160	16.40	11.60	3	34.80	9.00-X-20
TP 195-125	195	124	3160	14.00	10.40	3	31.20	9.00-X-20
TP 195-L-123	195	123	3125	10.50	8.00	4	32.00	9.00-X-20
TP 195-R-125	195	124	3160	12.10	9.35	3	28.05	9.00-X-20
TP 200-096	200	96	2450	13.00	7.60	4	30.40	235/75-R-17.5
TP 205-H-127	205	127	3225	14.00	11.35	3	34.05	9.00-R-20 10.00-X-20
TP 205-H-130	205	130	3300	14.00	11.60	3	34.80	10.00-X-20
TP 205-M-127	205	127	3225	12.85	10.60	3	31.80	9.00-R-20 10.00-X-20
TP 205-R-127	205	127	3225	11.00	9.52	3	28.56	9.00-R-20 10.00-X-20
TP 210-128	210	128	3250	14.00	11.70	3	35.10	10.00-R-20 10.00-X-20
TP 210-M-127	210	127	3225	13.20	11.20	3	33.60	10.00-R-20 10.00-X-20
TP 215-H-127	215	127	3225	13.60	11.80	3	35.40	10.00-R-20 10.00-X-20
TP 215-R-127	215	127	3225	12.50	10.65	3	31.95	10.00-R-20 10.00-X-20
TP 254-130	254	130	3300	13.30	14.30	2	28.60	295/80-R-22.5 315/80-R-22.5

*** Commercial Tolerance \pm 2% is to be allowed**

VAMSHI HIGH MILER (VHM)

BIAS & RADIAL



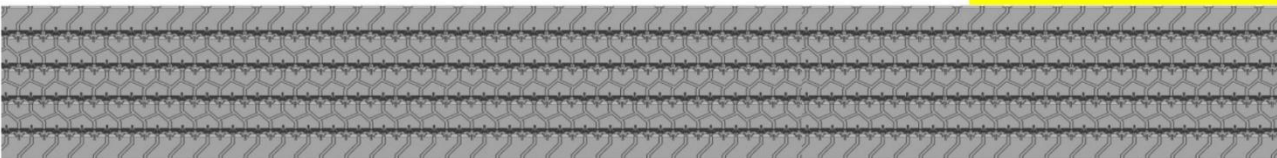
Traction Characteristics: *Free Rolling, All Wheel, Good Traction, High Performance*

Product Code	Tread width (mm)	Tread Length (Inch)	Tread Length (mm)	Non-Skid Depth (mm)	Weight per Tread	Treads Per Roll (kgs)	Roll Weight (kgs)	For Tyre / Sizes
VHM 145-087	145	87	2210	11.00	4.40	6	26.40	7.00 x 15
VHM 145-093	145	93	2350	11.00	4.67	6	28.02	7.00-R-15 7.00 X 15

* Commercial Tolerance \pm 2% is to be allowed

VAMSHI ROAD KING (VRK)

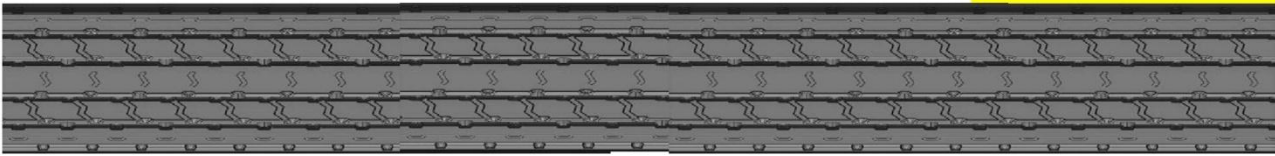
BIAS & RADIAL



Traction Characteristics: *Free Rolling, All Wheel, Good Traction, High Performance*

Product Code	Tread width (mm)	Tread Length (Inch)	Tread Length (mm)	Non-Skid Depth (mm)	Weight per Tread	Treads Per Roll (kgs)	Roll Weight (kgs)	For Tyre / Sizes
VRK 185-118	185	118	3000	12.25	8.45	4	33.80	8.25-R-20 8.25-X-20
VRK 215-128	215	128	3260	13.20	11.10	3	33.30	10.00-R-20 10.00-X-20
VRK 220-128	220	128	3260	13.50	11.55	3	34.65	10.00-R-20 10.00-X-20

* Commercial Tolerance \pm 2% is to be allowed

VAMSHI RADIAL MILER (VRM)**BIAS & RADIAL**

Traction Characteristics: *Free Rolling, All Wheel, Good Traction, Good Performance*

Product Code	Tread width (mm)	Tread Length (Inch)	Tread Length (mm)	Non-Skid Depth (mm)	Weight per Tread	Treads Per Roll (kgs)	Roll Weight (kgs)	For Tyre / Sizes
VRM 175-104	175	104	2635	14.00	7.75	4	31.00	8.25-R-20 8.25-X-20
VRM 175-119	175	119	3025	14.00	8.90	4	35.60	8.25-R-20 8.25-X-20

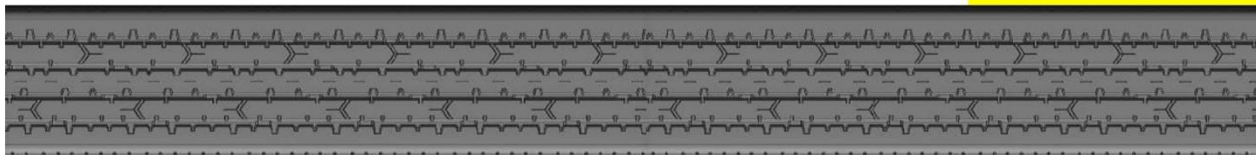
*** Commercial Tolerance \pm 2% is to be allowed**

VAMSHI SPREAD AXLE NEW (VSAN)**BIAS & RADIAL**

Traction Characteristics: *Free Rolling, All Wheel, Good Traction, High Performance*

Product Code	Tread width (mm)	Tread Length (Inch)	Tread Length (mm)	Non-Skid Depth (mm)	Weight per Tread	Treads Per Roll (kgs)	Roll Weight (kgs)	For Tyre / Sizes
VSAN 215-128	215	128	3260	14.80	11.45	3	34.35	10.00-R-20 10.00-X-20
VSAN 215-130	215	130	3300	14.80	11.60	3	34.80	10.00-R-20 10.00-X-20
VSAN 220-128	220	128	3260	14.80	11.95	3	35.85	10.00-R-20 10.00-X-20

*** Commercial Tolerance \pm 2% is to be allowed**

VAMSHI SUPER TRAC (VST)**BIAS & RADIAL****Traction Characteristics:*****Free Rolling, All Wheel, Good Traction, High Performance***

Product Code	Tread width (mm)	Tread Length (Inch)	Tread Length (mm)	Non-Skid Depth (mm)	Weight per Tread	Treads Per Roll (kgs)	Roll Weight (kgs)	For Tyre / Sizes
VST 205-124	205	124	3150	14.00	10.65	3	31.95	9.00-R-20 10.00-X-20
VST 205-128	205	128	3250	14.00	11.00	3	33.00	10.00-R-20 10.00-X-20

*** Commercial Tolerance \pm 2% is to be allowed**

WASTE HAULER LUG (WHL)**BIAS & RADIAL**

Traction Characteristics: *High Traction, Rear Axle, High Performance, Mixed Service*

Product Code	Tread width (mm)	Tread Length (Inch)	Tread Length (mm)	Non-Skid Depth (mm)	Weight per Tread	Treads Per Roll (kgs)	Roll Weight (kgs)	For Tyre / Sizes
WHL 160-H-098	160	98	2490	14.30	6.28	5	31.40	7.50-X-16
WHL 160-R-098	160	98	2490	12.30	5.38	5	26.90	7.50-X-16
WHL 170-098	170	98	2490	14.50	6.80	4	27.20	7.50-R-16
WHL 170-103	170	103	2610	14.50	7.15	4	28.60	8.25-X-16
WHL 170-118	170	118	3000	14.50	8.20	4	32.80	8.25-X-20
WHL 180-103	180	103	2610	14.60	7.65	4	30.60	8.25-R-16
WHL 180-118	180	118	3000	14.60	8.85	3	26.55	8.25-X-20
WHL 187-123	187	123	3125	16.00	10.25	3	30.75	9.00-X-20
WHL 195-H-123	195	123	3125	16.00	11.17	3	33.51	9.00-X-20
WHL 195-R-123	195	123	3125	14.60	10.32	3	30.96	9.00-X-20
WHL 205-H-127	205	127	3225	16.50	11.85	3	35.55	10.00-X-20
WHL 205-L-127	205	127	3225	13.50	10.45	3	31.35	9.00-R-20 10.00-X-20
WHL 205-M-127	205	127	3225	14.00	10.95	3	32.85	10.00-R-20 10.00-X-20
WHL 210-M-127	210	127	3225	14.10	11.15	3	33.45	10.00-R-20 10.00-X-20
WHL 212-127	212	127	3225	15.00	12.10	3	36.30	10.00-R-20 11.00-X-20
WHL 219-130	219	130	3300	15.00	11.85	3	35.55	10.00-R-20 11.00-X-20

*** Commercial Tolerance \pm 2% is to be allowed**

VAMSHI

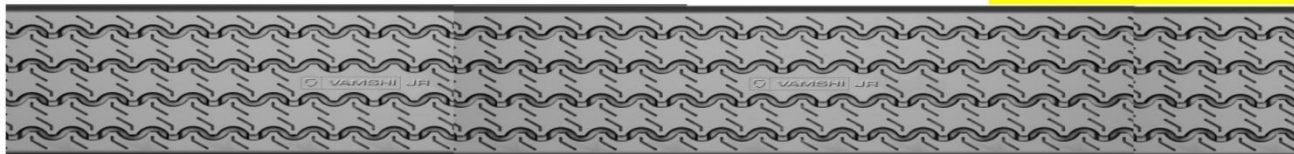
TREADS

PRODUCT BROCHURE

BIAS ONLY

JET RIB (JR)

BIAS ONLY



Traction Characteristics:

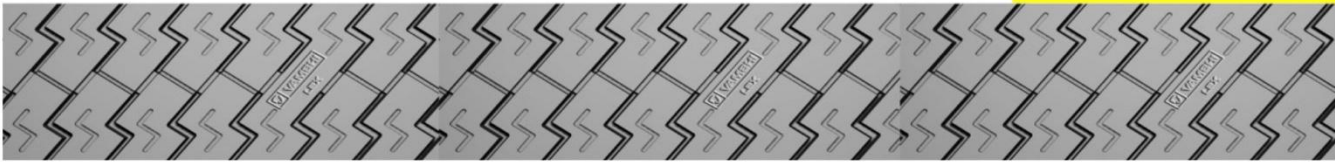
Good Traction, All Wheel, High Performance

Product Code	Tread width (mm)	Tread Length (Inch)	Tread Length (mm)	Non-Skid Depth (mm)	Weight per Tread	Treads Per Roll (kgs)	Roll Weight (kgs)	For Tyre / Sizes
JR 160-098	160	98	2490	11.30	5.63	5	28.15	7.50-X-16
JR 175-103	175	103	2610	12.60	7.00	4	28.00	8.25-X-20
JR 175-118	175	118	3000	12.60	8.00	4	32.00	8.25-X-20
JR 205-127	205	127	3225	14.50	11.75	3	35.25	10.00-X-20
JR 205-R-127	205	127	3225	12.70	10.55	3	31.65	10.00-X-20
JR 210-127	210	127	3230	14.50	11.85	3	35.55	10.00-X-20
JR 210-R-127	210	127	3225	13.10	11.00	3	33.00	10.00-X-20

* Commercial Tolerance \pm 2% is to be allowed

LUG EXCEL (LEX)

BIAS ONLY



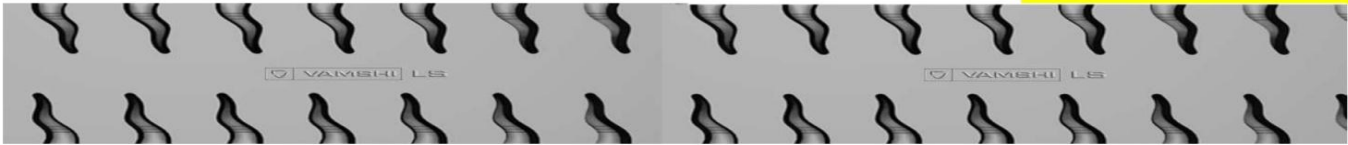
Traction Characteristics: *Rear Axle, Good Traction, Good Performance*

Product Code	Tread width (mm)	Tread Length (Inch)	Tread Length (mm)	Non-Skid Depth (mm)	Weight per Tread	Treads Per Roll (kgs)	Roll Weight (kgs)	For Tyre / Sizes
LEX 150-098	150	98	2490	12.10	5.52	5	27.60	6.00-X-16 7.00-X-15
LEX 160-098	160	98	2490	13.10	6.28	5	31.40	7.50-X-16
LEX 175-103	175	103	2625	13.10	7.25	4	29.00	8.25-X-16
LEX 175-118	175	118	3000	13.10	8.25	4	33.00	8.25-X-20
LEX 205-127	205	127	3225	14.30	11.75	3	35.25	10.00-X-20
LEX 208-127	208	127	3225	14.20	11.05	3	33.15	10.00-X-20
LEX 210-127	210	127	3225	13.70	11.75	3	35.25	10.00-X-20
LEX 210-H-126	210	126	3210	16.20	12.97	2	25.94	10.00-X-20
LEX 210-H-129	210	129	3280	16.20	13.25	2	26.50	10.00-X-20
LEX 210-SH-128	210	128	3250	17.50	14.40	2	28.80	10.00-X-20

*** Commercial Tolerance \pm 2% is to be allowed**

LUG STAR (LS)

BIAS ONLY



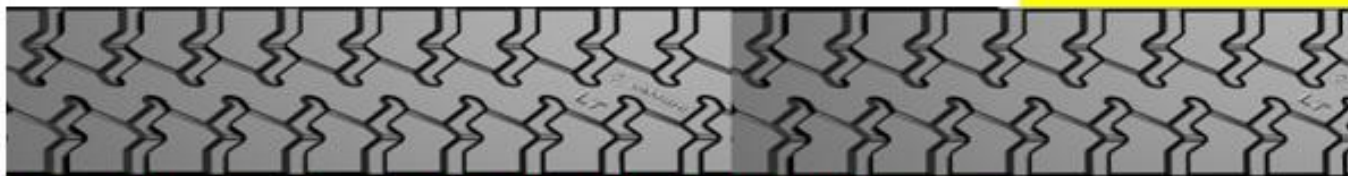
Traction Characteristics: *High Traction, Rear Axle, High Performance*

Product Code	Tread width (mm)	Tread Length (Inch)	Tread Length (mm)	Non-Skid Depth (mm)	Weight per Tread	Treads Per Roll (kgs)	Roll Weight (kgs)	For Tyre / Sizes
LS 210-127	210	127	3225	15.30	12.65	3	37.95	10.00-X-20

* Commercial Tolerance \pm 2% is to be allowed

LUG TRAC (LT)

BIAS ONLY



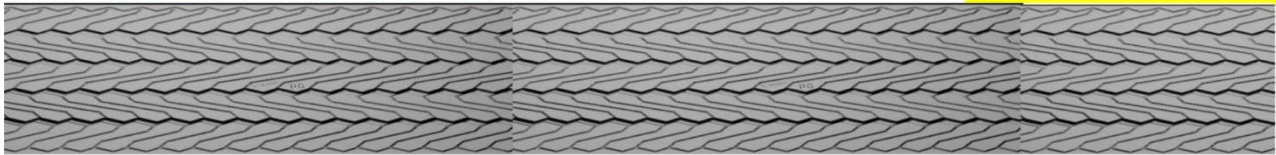
Traction Characteristics: *Free Rolling, All Wheel, High Performance*

Product Code	Tread width (mm)	Tread Length (Inch)	Tread Length (mm)	Non-Skid Depth (mm)	Weight per Tread	Treads Per Roll (kgs)	Roll Weight (kgs)	For Tyre / Sizes
LT 160-098	160	98	2490	13.30	6.23	5	31.15	7.50-X-16
LT 160-M-098	160	98	2490	12.00	5.63	5	28.15	7.50-X-16
LT 170-105	170	105	2670	13.00	7.10	4	28.40	8.25-X-16
LT 170-118	170	118	3000	13.00	7.95	4	31.80	8.25-X-16 8.25-X-20
LT 170-M-103	170	103	2615	12.50	6.60	5	33.00	8.25-X-16
LT 170-M-118	170	118	3000	12.50	7.55	4	30.20	8.25-X-16 8.25-X-20
LT 187-123	187	123	3125	14.70	10.25	3	30.75	9.00-X-20
LT 195-123	195	123	3125	13.80	10.10	3	30.30	9.00-X-20
LT 203-H-127	203	127	3225	14.80	11.55	3	34.65	10.00-X-20
LT 205-L-128	205	128	3250	12.10	9.85	3	29.55	10.00-X-20
LT 205-M-125	205	124	3160	13.50	10.75	3	32.25	10.00-X-20
LT 205-M-127	205	127	3225	13.50	10.95	3	32.85	10.00-X-20
LT 205-R-127	205	127	3225	11.60	9.65	3	28.95	10.00-X-20
LT 210-126	210	126	3195	14.70	11.30	3	33.90	10.00-X-20
LT 210-127	210	127	3225	14.70	11.45	3	34.35	10.00-X-20
LT 215-127	215	127	3225	15.00	12.05	3	36.15	10.00-X-20
LT 215-128	215	128	3250	15.00	12.15	3	36.45	10.00-X-20

* Commercial Tolerance $\pm 2\%$ is to be allowed

POWER CUSHION (PC)

BIAS ONLY



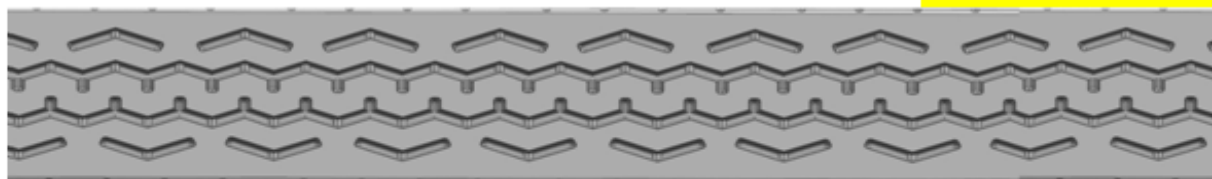
Traction Characteristics: *Free Rolling, High Traction, Anti Skid, High Performance*

Product Code	Tread width (mm)	Tread Length (Inch)	Tread Length (mm)	Non-Skid Depth (mm)	Weight per Tread	Treads Per Roll (kgs)	Roll Weight (kgs)	For Tyre / Sizes
PC 100-065	100	65	1650	10.00	2.17	12	26.04	4.50-X-12 5.65-X-12
PC 110-085	110	85	2160	10.00	3.17	10	31.70	5.90-X-15 145/70-R-15
PC 115-085	115	85	2160	10.00	3.12	10	31.20	5.90-X-15 145/70-R-15

* Commercial Tolerance \pm 2% is to be allowed

VAMSHI PORT SPECIAL (VPS)

BIAS ONLY



Traction Characteristics: *Free Rolling, All Wheel, High Performance*

Product Code	Tread width (mm)	Tread Length (Inch)	Tread Length (mm)	Non-Skid Depth (mm)	Weight per Tread	Treads Per Roll (kgs)	Roll Weight (kgs)	For Tyre / Sizes
VPS 205-127	205	127	3225	14.00	11.40	3	34.20	10.00-X-20
VPS 205-129	205	129	3265	14.00	11.55	3	34.65	10.00-X-20

* Commercial Tolerance \pm 2% is to be allowed

VAMSHI SUPER MILER (VSM)**BIAS ONLY****Traction Characteristics: *Free Rolling, All Wheel, High Performance***

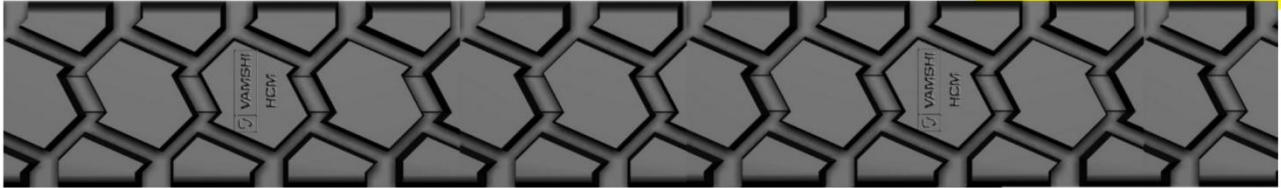
Product Code	Tread width (mm)	Tread Length (Inch)	Tread Length (mm)	Non-Skid Depth (mm)	Weight per Tread	Treads Per Roll (kgs)	Roll Weight (kgs)	For Tyre / Sizes
VSM 205-127	205	127	3225	12.70	10.25	3	30.75	10.00-X-20
VSM 205-130	205	130	3300	12.70	10.50	3	31.50	10.00-X-20

*** Commercial Tolerance $\pm 2\%$ is to be allowed**

VAMSHI **TREADS**

PRODUCT BROCHURE

MINES & OTR



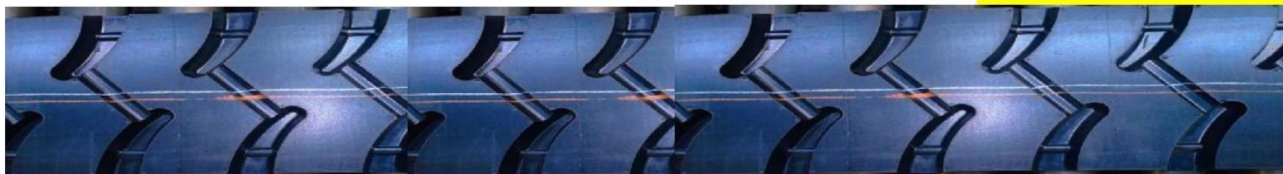
Traction Characteristics: *Rear Wheel, Excellent Traction, Good Service in Rough Terrain & Mines*

Product Code	Tread width (mm)	Tread Length (Inch)	Tread Length (mm)	Non-Skid Depth (mm)	Weight per Tread	Treads Per Roll (kgs)	Roll Weight (kgs)	For Tyre / Sizes
HCM 228-130	228	130	3300	15.90	13.25	2	26.50	11.00-R-20 11.00-X-20 12.00-X-20
HCM 228-134	228	134	3400	15.90	13.65	2	27.30	11.00-R-20 11.00-X-20 12.00-X-20
HCM 238-134	238	134	3400	15.30	14.15	2	28.30	12.00-X-20
HCM 238-148	238	148	3750	15.30	15.55	2	31.10	12.00-X-20

*** Commercial Tolerance \pm 2% is to be allowed**

K.M.C (KMC)

MINES & OTR



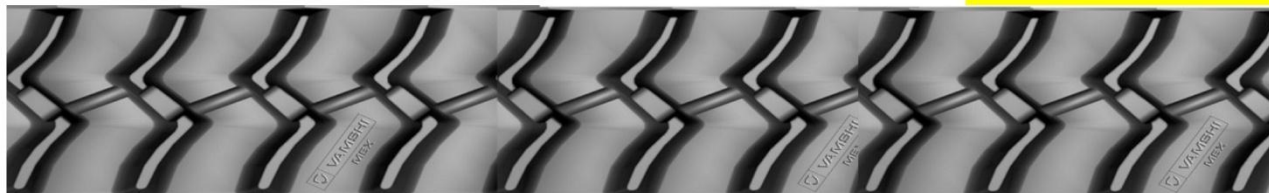
Traction Characteristics: *Rear Wheel, Excellent Traction, Good Service in Rough Terrain & Mines*

Product Code	Tread width (mm)	Tread Length (Inch)	Tread Length (mm)	Non-Skid Depth (mm)	Weight per Tread	Treads Per Roll (kgs)	Roll Weight (kgs)	For Tyre / Sizes
KMC-205-128	205	128	3250	18.00	14.50	2	29.00	10.00-X-20

*** Commercial Tolerance \pm 2% is to be allowed**

MINES EXCLUSIVE (MEX)

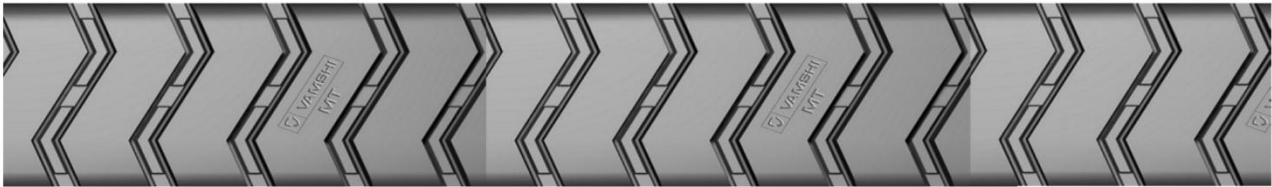
MINES & OTR



Traction Characteristics: *Rear Wheel, Excellent Traction, Good Service in Rough Terrain & Mines*

Product Code	Tread width (mm)	Tread Length (Inch)	Tread Length (mm)	Non-Skid Depth (mm)	Weight per Tread	Treads Per Roll (kgs)	Roll Weight (kgs)	For Tyre / Sizes
MEX 205-127	205	127	3225	13.20	10.70	3	32.10	10.00-X-20
MEX 215-129	215	129	3275	16.00	13.35	2	26.70	10.00-X-20 11.00-X-20

*** Commercial Tolerance \pm 2% is to be allowed**



Traction Characteristics: *Rear Wheel, Excellent Traction, Good Service in Rough Terrain & Mines*

Product Code	Tread width (mm)	Tread Length (Inch)	Tread Length (mm)	Non-Skid Depth (mm)	Weight per Tread	Treads Per Roll (kgs)	Roll Weight (kgs)	For Tyre / Sizes
MT 205-127	205	127	3225	14.00	11.05	3	33.15	10.00-X-20
MT 210-127	210	127	3225	13.80	11.45	3	34.35	10.00-X-20
MT 240-131	240	131	3325	15.00	14.42	2	28.84	11.00-X-20 12.00-R-20
MT 240-134	240	134	3400	15.00	14.75	2	29.50	11.00-X-20 12.00-R-20
MT 240-148	240	148	3750	15.00	16.30	2	32.60	12.00-X-24

Note: MT TREAD PATTERN FOR THE UNDER MENTIONED SIZES



MT 215-126	215	126	3195	14.00	11.53	3	34.59	10.00-X-20
MT 215-129	215	129	3280	14.00	11.82	3	35.46	10.00-X-20
MT 230-127	230	127	3225	15.00	12.65	3	37.95	10.00-X-20
MT 230-130	230	130	3308	15.00	13.00	3	39.00	10.00-R-20 10.00-X-20 11.00-R-20 11.00-X-20
MT 230-134	230	134	3400	15.00	13.35	3	40.05	10.00-R-20 10.00-X-20 11.00-R-20 11.00-X-20

*** Commercial Tolerance \pm 2% is to be allowed**

MINES TRAC DEEP (MTD)**MINES & OTR**

Traction Characteristics: *Rear Wheel, Excellent Traction, Good Service in Rough Terrain & Mines*

Product Code	Tread width (mm)	Tread Length (Inch)	Tread Length (mm)	Non-Skid Depth (mm)	Weight per Tread	Treads Per Roll (kgs)	Roll Weight (kgs)	For Tyre / Sizes
MT 240-XD-135	240	135	3425	24.00	21.10	2	42.20	12.00-X-20
MT 240-XD-147	240	147	3730	24.00	23.00	2	46.00	12.00-X-24
MTD 240-132	240	132	3350	19.20	16.90	2	33.80	11.00-X-20
MTD 240-134	240	134	3400	19.20	17.15	2	34.30	12.00-X-20
MTD 240-143	240	143	3640	19.20	18.35	2	36.70	12.00-X-24
MTD 240-147	240	147	3730	19.20	18.80	2	37.60	12.00-X-24

Note: MTD TREAD PATTERN FOR THE UNDER MENTIONED SIZES



MTD 310-163	310	163	4140	25.00	38.05	1	38.05	14.00-X-24 14.00-X-25
-------------	-----	-----	------	-------	-------	---	-------	--------------------------

*** Commercial Tolerance \pm 2% is to be allowed**

SUPER LUG (SL)

MINES & OTR



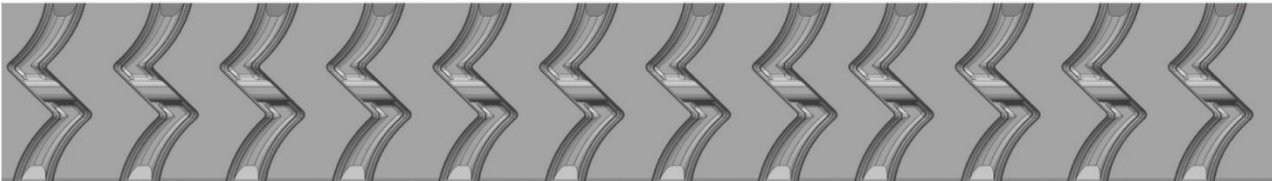
Traction Characteristics: *High Traction, Rear Axle, Good Performance*

Product Code	Tread width (mm)	Tread Length (Inch)	Tread Length (mm)	Non-Skid Depth (mm)	Weight per Tread	Treads Per Roll (kgs)	Roll Weight (kgs)	For Tyre / Sizes
SL 205-127	205	127	3225	15.20	11.65	3	34.95	9.00-R-20 10.00-X-20

*** Commercial Tolerance \pm 2% is to be allowed**

SUPER LUG MINES (SLM)

MINES & OTR



Traction Characteristics: *Rear Wheel, Excellent Traction, Good Service in Rough Terrain & Mines*

Product Code	Tread width (mm)	Tread Length (Inch)	Tread Length (mm)	Non-Skid Depth (mm)	Weight per Tread	Treads Per Roll (kgs)	Roll Weight (kgs)	For Tyre / Sizes
SLM 240-148	240	148	3750	18.50	18.35	2	36.70	12.00-X-24

*** Commercial Tolerance \pm 2% is to be allowed**

VAMSHI BHUMIPUTRA (VBP)**MINES & OTR /
TRACTOR**

Traction Characteristics: *Rear Wheel, Excellent Traction, Good Service in Rough Terrain & Mines*

Product Code	Tread width (mm)	Tread Length (Inch)	Tread Length (mm)	Non-Skid Depth (mm)	Weight per Tread	Treads Per Roll (kgs)	Roll Weight (kgs)	For Tyre / Sizes
VBP 390-140	390	140	3560	35.50	31.50	1	31.50	13.6-R-28 13.6-X-28

*** Commercial Tolerance \pm 2% is to be allowed**

VAMSHI GRADER (VGR)**MINES & OTR**

Traction Characteristics: *Excellent Traction, Rear Axle, High Performance*

Product Code	Tread width (mm)	Tread Length (Inch)	Tread Length (mm)	Non-Skid Depth (mm)	Weight per Tread	Treads Per Roll (kgs)	Roll Weight (kgs)	For Tyre / Sizes
VGR 375-146	375	146	3713	27.50	30.70	1	30.70	13.00-R-24 13.00-X-24
VGR 375-153	375	153	3890	27.50	32.15	1	32.15	14.00-R-24 14.00-X-24

*** Commercial Tolerance \pm 2% is to be allowed**

VAMSHI MINES ROCK(VMR)**MINES & OTR**

Traction Characteristics: *Rear Wheel, Excellent Traction, Good Service in Rough Terrain & Mines*

Product Code	Tread width (mm)	Tread Length (Inch)	Tread Length (mm)	Non-Skid Depth (mm)	Weight per Tread	Treads Per Roll (kgs)	Roll Weight (kgs)	For Tyre / Sizes
VMR 240-XD-143	240	143	3620	25.00	23.05	2	46.10	12.00-X-24
VMR 240-XD-146	240	146	3715	25.00	23.65	2	47.30	12.00-X-24

*** Commercial Tolerance \pm 2% is to be allowed**

VAMSHI ROCK LUG (DEEP) VRL(D)**MINES & OTR**

Traction Characteristics: *High Traction, Rear Axle, Good Performance*

Product Code	Tread width (mm)	Tread Length (Inch)	Tread Length (mm)	Non-Skid Depth (mm)	Weight per Tread	Treads Per Roll (kgs)	Roll Weight (kgs)	For Tyre / Sizes
VRL 240-D-147	240	147	3730	22.00	21.35	2	42.70	12.00-X-24

*** Commercial Tolerance \pm 2% is to be allowed**

VAMSHI

PRODUCT BROCHURE

CAMELBACK TREAD RUBBER



APPLICATION

TRUCK

TRACTOR (Front & Rear)

OFF THE ROAD (OTR)

CAMEL BACK TREAD RUBBER (CBTR) - TRUCK													
SL. NO.	SIZE	Base Width (mm)	Crown Width (mm)	Tread Thickness (mm)	Wing Thickness (mm)	Wing Width (mm)	Roll Length (Feet's)	Roll Weight (kgs)			Application / Tyre Size		
	Tolerance	+2 mm	+2 mm	+0.5 mm	+0.3 mm	+2 mm	+3"	Premium	Regular				
1	74 - 22	188	-	17.5	-	-	31'9"	36.5 - 37.0	37.5 - 38.0		10.00-X-20		
2	78 - 22	198	-	17.5	-	-	31'9"	38.0 - 38.5	39.0 - 39.5		10.00-X-20		
3	78 - 24	198	-	17.5	-	-	31'9"	40.0 - 40.5	41.0 - 41.5		10.00-X-20		
4	80 - 22	206	-	18.6	-	-	31'9"	42.5 - 43.0	43.5 - 44.0		10.00-X-20		
5	84 - 22	215	-	17.5	-	-	32'3"	43.8 - 44.3	44.5 - 45.0		10.00-X-20		
6	74-100-20	254	188	15.9	9.00	33	31'9"	40.0 - 40.5	41.0 - 41.50		10.00-X-20		
7	74-110-20	280	188	15.9	9.00	46	31'9"	42.4 - 43.0	43.4 - 44.0		10.00-X-20		
CAMEL BACK TREAD RUBBER (CBTR) - TRACTOR													
SL. NO.	SIZE	Base Width (mm)	Crown Width (mm)	Middle Width (mm)	Middle Thickness (mm)	Total Thickness (mm)	Wing Thickness (mm)	Wing Width (mm)	Roll Booking Length (Feet's)	No of Rolls in the Packag	Roll Weight		Application / Tyre Size
	Tolerance	+3 mm	+3 mm	+3 mm	+0.5 mm	+0.5 mm	+0.5 mm	+2 mm	+2.0"	Nos	- 0 / +1.0 Kg		
1	50-70-16	178	127	-	-	12.70	5.60	25	21'9"	2	14.85	15.10	600-X-16
2	50-70-18	178	127	-	-	14.30	5.60	25	21'9"	2	16.55	16.85	600-X-16
3	50-74-16	188	127	-	-	12.70	5.60	30	21'9"	2	15.50	15.80	600-X-16
4	50-74-18	188	127	-	-	14.30	5.60	30	21'9"	2	16.80	17.10	600-X-16
5	100-150-24	381	254	-	-	19.10	6.70	63	12 ½	1	25.20	25.60	12.4-X-28
6	100-150-26	381	254	-	-	20.60	6.70	63	12 ½	1	27.00	27.40	12.4-X-28
7	100-150-28	381	254	-	-	22.20	6.70	63	12 ½	1	28.80	29.30	12.4-X-28
8	100-150-28-XL	381	254	-	-	22.20	6.70	63	21 ½	1	50.40	51.20	12.4-X-28
9	110-150-24	381	279	-	-	19.10	6.70	50	12 ½	1	26.26	27.10	13.6-X-28
10	110-150-26	381	279	-	-	20.60	6.70	50	12 ½	1	28.50	29.00	13.6-X-28
11	110-150-26-XL	381	279	-	-	20.60	6.70	50	21'9"	1	50.70	51.70	13.6-X-28
12	110-150-28	381	279	-	-	22.20	6.70	50	12 ½	2	30.50	31.00	13.6-X-28
13	110-150-28-G	381	279	-	-	22.60	11.60	50	16'2"	1	43.60	44.40	13.6-X-28
14	110-150-28-XL	381	279	-	-	22.20	6.70	50	20'6"	1	50.70	51.70	13.6-X-28
15	110-150-30	381	279	-	-	23.80	10.00	50	12 ½	2	33.50	34.30	13.6-X-28
16	45-110-150-30	381	279	114	28.80	23.80	6.70	50	17.0	1	49.80	50.50	13.6-X-28
17	110-150-32	381	279	-	-	26.20	7.50	50	12 ½	1	34.50	35.00	13.6-X-28
18	110-160-30-XL	406	279	-	-	23.80	6.70	63	18'9"	1	50.50	51.50	13.6-X-28
19	120-160-30	406	305	-	-	24.20	8.20	50	14.0	1	40.70	41.40	14.9-X-28
20	120-180-34	457	305	-	-	27.80	9.80	75	13'8"	1	48.20	48.80	13.00-X-24 14.00-X-24 14.00-X-24
21	125-175-28	445	318	-	-	22.20	9.00	63	13'2"	1	41.60	42.30	14.9-X-28
22	130-170-32	432	330	-	-	27.00	9.00	50	13'6"	1	46.90	47.70	16.9-X-28
23	130-180-30	457	330	-	-	26.00	7.20	63	13'8"	1	44.50	45.40	16.9-X-28
24	130-180-32	457	330	-	-	27.20	9.20	63	14.0	1	50.20	51.10	13.00-X-24 14.00-X-24 14.00-X-24
25	140-180-32	475	356	-	-	25.40	7.80	60	14.0	1	49.50	50.50	13.00-X-24 14.00-X-24 14.00-X-24
26	140-180-36	475	356	-	-	28.60	7.80	60	14.0	1	55.50	56.50	13.00-X-24 14.00-X-24 14.00-X-24
FILLING TREAD (FT) & UNDER TREAD STRIP (UTS)													
SL. NO.	SIZE	Item	Base Width (mm)			Tread Thickness (mm)	Wing Thickness (mm)	Wing Width (mm)	Roll Weight				
	Tolerance		±2 mm			+0.3 mm	+0.3 mm	+2 mm					
1	FT 23-6	Filling Tread	58			4.80	-	-	32 ± 2 Kgs				
2	FT 25-8	Filling Tread	260 (4 Strips 65 mm wide)			6.40	-	-	32 ± 2 Kgs				
3	FT 30-8	Filling Tread	375 (5 Strips 75 mm wide)			6.40	-	-	50 ± 2 Kgs				
4	FT 30-44-10	Filling Tread	223 (2 Strips 76 mm wide)			8.00	4.00	18.0	32 ± 2 Kgs				
5	FT 30-44-12	Filling Tread	223 (2 Strips 76 mm wide)			9.50	4.00	18.0	32 ± 2 Kgs				
6	UTS 2mm	Under Tread Strip	220			3.00	-	-	32 ± 2 Kgs				
7	UTS 3mm	Under Tread Strip	220			2.00	-	-	32 ± 2 Kgs				

CUSHION GUM



99°C

125°C

150°C

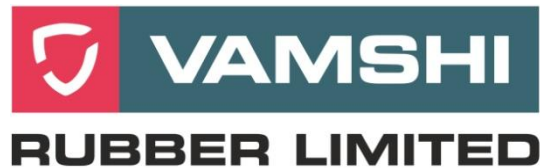
VULCANISING SOLUTION



99°C Brush & Spray Type

125°C Brush & Spray Type

150°C Brush Type



CUSHION GUM – ROPE



99°C

125°C

150°C

CURING ENVELOPES



Full Skirt for Electrical Chamber

SIZES
32 X 14
40 X 17
42 X 19
42 X 19 XL

Half Skirt for Steam Chamber

SIZES
32 X 19
40 X 25
42 X 25

ANDHRA PRADESH / TELANGANA

VAMSHI RUBBER LIMITED
Plot No.4, Block No.21, Autonagar,
Hyderabad – 500070
Ph: +91-40-46043160 / 29802533
E-Mail: info@vamshirubber.org

GUJARAT

VAMSHI RUBBER LIMITED
A-4, Plot No.83, Sri Raghuveer Estate,
NH.No.9, Aslali Bye-Pass, Daskaroi,
Ahmedabad – 382427
Contact: Mr.Kamal S.Jadav, Ph: 9824691915
E-Mail : vrlahmedabad@vamshirubber.org

MAHARASHTRA

VAMSHI RUBBER LIMITED
Survey No.189/1A/2, Ganesh Nagar,
Fursinghi, Pune, 412308
Contact: Mr.Balbir Singh Parmar, 9423252629
e-Mail: vrlpune@vamshirubber.org

PUNJAB / J&K & Northern States

VAMSHI RUBBER LIMITED
Godown No.2&3, Nagra Building Complex (N.B.C)
Ambala – Chandigarh Road, NH.21, Zirakpur
SAS Nagar, Mohali – 140603
Contact: Mr.Sunil Verma, Ph: 9417287778
E-Mail: vrlchandigarh@vamshirubber.org

TAMILNADU

VAMSHI RUBBER LIMITED
PLOT NO.69, A.P NAGAR
VISWAS NAGAR EXTN., NEAR PALPANNAI
TRICHY, 620008
Contact: Mr.N.Muralidharan, Ph:7010610599
E-Mail: vrltrichy@vamshirubber.org

**All Domestic Trade
Enquiries (rest of India)**

Mr.T. Sounder Rajan
General Manager (Customer Service)
Ph: 9848848441
E-Mail : tsrajan@vamshirubber.org

ASSAM

VAMSHI RUBBER LIMITED
OPP:Tourist Dhabha
Basishta Mandir Path, Guwahati – 781028
Contact : Mr.Joydeep Barua, PH:9435401272
E-Mail: vrlguwahati@vamshirubber.org

KARNATAKA

VAMSHI RUBBER LIMITED
NP 9 & 10, Behind Match Point,
Near Prathyangira Devi Temple, Thura Halli,
Subrahmanyapura, Bangalore - 560061
Contact : Mr.Ramachandra, Ph: 9886970693
E-Mail: vrlbangalore@vamshirubber.org

MADHYA PRADESH

VAMSHI RUBBER LIMITED
639/1, Categorised Market,
New Kabadkhana, Bhopal - 462018
Contact: Mr.Prabhakar Tiwari, 7805805910
E-Mail: vrlbhopal@vamshirubber.org

RAJASTHAN

VAMSHI RUBBER LIMITED
Contact: Avinash Jha,
Ph: 9351273205 / 9461410503
E-Mail : jhaavinash75@yahoo.in

WEST BENGAL

VAMSHI RUBBER LIMITED
11-F, Satyendranath Mujumder Sarani
Monoharpukur, Kolkata - 700 026
Contact: Mr.Sanjit Sen Gupta, Ph:8240477311
E-Mail: vrlkolkata@vamshirubber.org

ALL EXPORT ENQUIRIES

Mr.Gopinath K
General Manager (Export)
Ph: 9989488153
E-Mail: gopinathk@vamshirubber.org



REGISTERED OFFICE

"VAMSHI HOUSE" Plot No.41,
Jayabheri Enclave, Gachibowli,
Hyderabad - 500 032
Telangana, India

FACTORY

Survey No.312/E, Lingo jigudem Village,
Choutuppal Mandal,
Yadadri Bhuvanagiri Dist.,
Telangana – 508 252 India,

Ph: +91-40-46043160 / 29802533

Website vamshirubber.org

E-Mail: info@vamshirubber.org



Design @ deepshikasoft.com